



Shaping our future together

Project Newsletter 7 – May 2020

In 2019 we took a bold decision to change our approach to HPC 60|60 – our project to shape the future of Hornsey Parish Church. We asked our architects to develop a new proposal – focussed on retaining and refurbishing as many of the existing buildings as possible, while adding residential accommodation above the church hall. This approach enables us to meet the needs of our community, and secure our financial future, while keeping our sense of place, identity and continuity with our past.

In this newsletter we are happy to share the new design with you – our congregation, neighbours and community. The following pages include a summary of our ambitions for the project, the work we have done so far, and our current design. We hope you are as excited as we are about the opportunity to renew and improve our existing buildings through: the refurbishment of the church and community spaces; the addition of residential accommodation above the church hall; an elegant extension linking spaces across the site; a striking new entrance from Park Road; and newly landscaped car park and gardens.

We would like to ask for your feedback – by the 19th May 2020 – as this will help us finalise the design, prior to submission to Haringey Council for planning permission. Please let us know what you think by filling in our online survey or writing to us at HPC 60|60, c/o 140 Cranley Gardens, London N10 3AH, if you are unable to go online. We are also holding an online event on Tuesday 19th May to answer any questions you have about the project. Further details about the project, the survey, and the event are available at hornseyparishchurch.org.

We look forward to seeing you - online or in person - in the future, and we hope that you will continue to support Hornsey Parish Church as it seeks to carry on serving the people of Hornsey well beyond the twenty first century.

Father Bruce Batstone



Our Cranley Gardens site



The church interior



Discussions about the project, Sep 2017

VISION

In 2017 Hornsey Parish Church embarked on an ambitious new project. At almost 60 years old, the church and community buildings were showing their age. We also needed to look to forward - to ensure the sustainability of our church and its congregation for future generations. We committed to taking a once-in-a-lifetime opportunity - HPC 60|60 - so that Hornsey Parish Church can continue to serve the community for another 60 years and more.



DESIGN DEVELOPMENT

Our architects then began to bring our vision to life through the development of more detailed designs. We attended several meetings with Haringey Council to review and develop the proposals, while undertaking feasibility studies to review the financial sustainability of the plans. Throughout this technical stage of the project we kept our community updated through newsletters and an exhibition at the Christmas Market in 2018. We continued to reflect on the feedback we received, while reviewing and revising our approach to the project.



INITIAL IDEAS

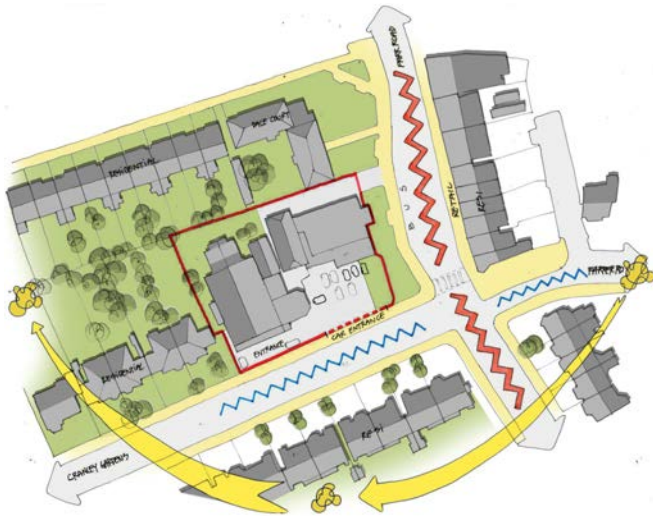
We started by meeting lots of different people and listening to ideas about how we might best shape the future together. These discussions included members of the congregation, people living close by the church site, and many others involved in the community. We shared the feedback we received in newsletters and an exhibition at the Christmas Market in 2017. This process challenged and inspired us and helped to inform an ever-deepening and more refined brief for our architects.

CHANGE OF DIRECTION

In 2019 we took a bold decision to change our approach to HPC 60|60 - and shared our ideas at the Church Open Day and Christmas Market. We asked our architects to develop a new proposal - focussed on retaining and refurbishing as many of the existing buildings as possible, while adding residential accommodation above the church hall. This approach enables us to meet the needs of our community, and secure our financial future, while keeping our sense of place, identity and continuity with our past.

A NEW DESIGN

In May 2020 we are happy to share the new design with our community. We hope you are as excited as we are about the opportunity to renew and improve our existing buildings so that Hornsey Parish Church can carry on serving the people of Hornsey well beyond the twenty first century.



Sep 2017
Focus groups
Residents' meeting

Oct 2017 Design Workshop

Nov '17 - Jan '18 Exhibition

WHAT YOU TOLD US

WHAT THE PROJECT INCLUDES

THE CHURCH

We love the church. It is beautiful, light, airy, spacious, peaceful, with a sense of history.

HALL

The hall is a valued community resource... but it needs a complete overhaul to improve the heating, lighting, acoustics, entrance. A decent kitchen would be an asset.

DISCONNECTED SPACES

Circulation around the site is labyrinthine, spaces and activities are disconnected.

PARK ROAD ENTRANCE

Create a strong, welcoming presence on Park Road with a new entrance and views to the church.

MARIAN CENTRE

Beautiful; of historical and architectural value; loved by those who use it; functionality for the youth activities currently held there.

RESIDENTIAL

There is a significant shortage of housing locally, especially affordable housing - it would be good to include some in the scheme.

CHURCH ROOM

Well loved as a space for social activities and hospitality

VESTRY

Need a larger vestry

GARDEN

It is liked and valued by regular users, but recognised to be inaccessible and underused.

PARKING

The on-site parking is important to users and local residents but the car park currently makes the site look uninviting.



The Cranley Gardens entrance



The church interior



The hall



The Park Road streetfront



The Marian Centre



The car park

THE CHURCH

Landscaping to make the approach from Cranley Gardens more attractive

HALL

Comprehensive refurbishment, including new toilets and new access to the garden; connection through to new kitchen in the Marian Centre

CONNECTING GALLERY

A new lightweight, glazed volume will house new meeting rooms and services and connect all the community and parish spaces across the site, resolving the accessibility problems caused by the different floor levels.

PARK ROAD ENTRANCE

Attractive new entrance on Park Road

MARIAN CENTRE

Internal refurbishment of the Marian Centre to house a community kitchen and the parish office on the ground floor and the refurbished dance studio on the first floor.
A lift or a stairlift will also be fitted.

RESIDENTIAL

Two levels of residential accommodation to be built above the hall, with access from Park Road

CHURCH ROOM

Refurbishment and new internal layout

VESTRY

New vestry, with direct access to altar, church room and garden

GARDEN

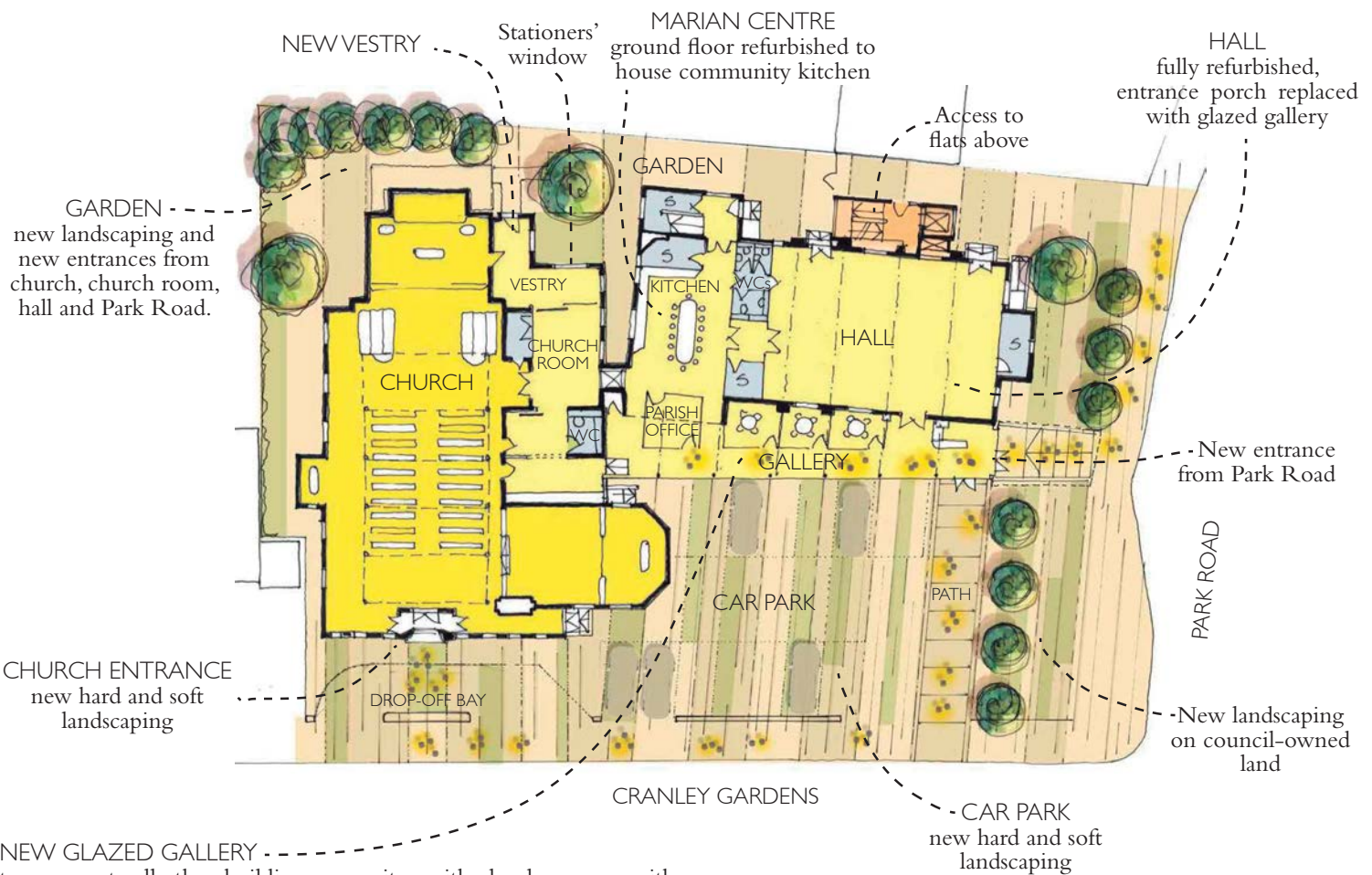
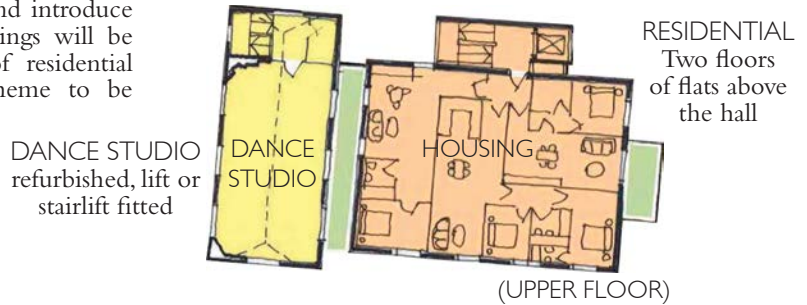
New landscaping, new entrances from Park Road, the church, the church room, the hall

PARKING

The car park will be retained in the same location. New hard and soft landscaping will define the spaces and integrate the parking area with the rest of the site.

OVERVIEW

The proposal centres on getting the most out of what we have by retaining all our existing buildings. A new glazed gallery will connect them, house some new spaces and services, and introduce a striking new entrance from Park Road. The buildings will be comprehensively refurbished and two new floors of residential accommodation above the hall will enable the scheme to be financially sustainable.



NEW GLAZED GALLERY to connect all the buildings on site with level access; with entrances on Park Road and towards Cranley Gardens. It will house various new spaces and the parish office. The photos below give a rough idea of the style of the designs.



YOUR FEEDBACK

As we finalize the design, prior to submission to Haringey Council for planning permission, we would like to ask for your feedback. You can find out more about the proposals and tell us what you think by:

- Filling in our online survey by 19th May 2020
- Attending our online event on 19th May 2020
- Writing to us at the address below, if you're unable to go online

If you'd like to receive future updates about the HPC 60|60 project please send us your contact details to info@hornseyparishchurch.org or by letter to: HPC 60|60, c/o 140 Cranley Gardens, London N10 3AH.